

7.1.5 Green campus initiatives

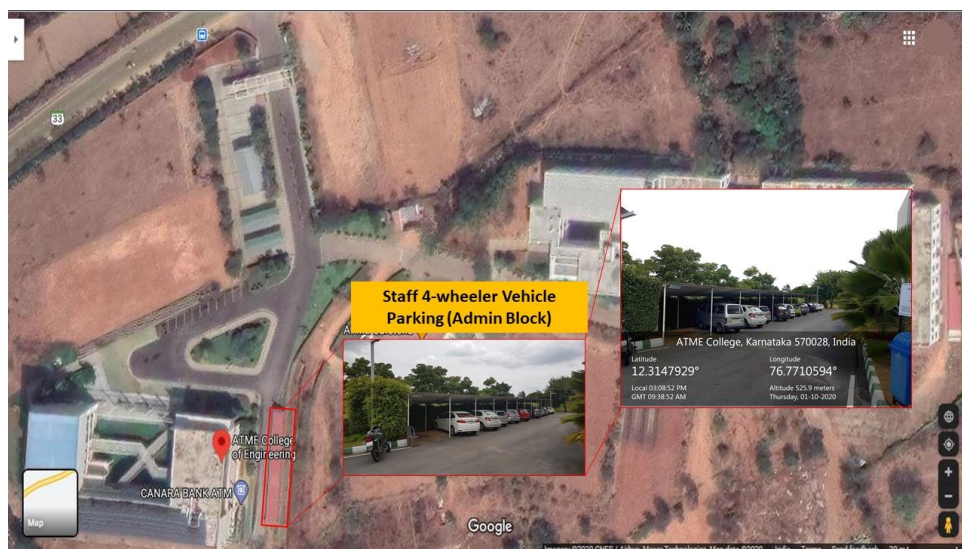
GREEN PRACTICES:

- The ATME College of Engineering has aesthetically designed green buildings, surrounded by greenery creating good ambience for Teaching & learning.
- The classrooms are well ventilated for fresh air and lighting is adequate for the learning.
- Dustbins have been provided along all major corridors & Every block for collection and waste.
- Drinking water facility (RO-Water) is provided for students and staffs for each block.
- Water treated from Sewage Treatment plant are used for flushing and for gardening, ensuring no water is wasted in the campus.
- Also, rainwater harvesting facility is also provided ensuring the refilling of underground wells during the rainy season.
- Firefighting services have been installed all around the campus as per the regulatory norms suggested during the approval for the building plans.
- A Maintenance Section constituted in the college will take care of the maintenance of the campus with sufficient human resources.
- The campus has lush green lawns and well grown trees, thus making the institute, eco-friendly.
- The campus also houses its own roof top power generation Plant of 95KWP capacity, ensuring green power source and its commitment to Green Energy initiative.

7.1.5.1 Restricted Entry of automobiles

With the intention of keeping the noise pollution and air-pollution at lower levels, ATMECE has restricted the entry and movement of automobiles in the campus. Most of the vehicles are of students', they have been given the parking lot near the entrance so that most of the vehicular movement is avoided inside the campus. Faculty and visitor's parking areas are also designated

to minimise the unnecessary movement of the vehicle in the campus. The geotagged photographs are provided for better clarity.







7.1.5.2 Pedestrian friendly roads:

The campus comprises of a good network of roads with shoulders paved using paver blocks. As the shoulders are wide and maintained regularly, it is very safe for the users in the campus.

Institution is providing many accessible facilities to take care of the physically challenged students and elderly persons viz., Lifts, Ramps/Rails, Special Toilets, Wheelchair Facility etc.





The infrastructures provided for unobstructed movement of disabled student in ATMECE campus.

7.1.5.3 Plastic free campus:

- ATME College of Engineering has belief in Sustainable development & Growth. Since from the inception the college campus is made Plastic free and sufficient care has to be taken in this direction.
- Signage boards saying “Plastic Free Zone” is placed in each block at key positions along with the dustbins.
- Two dustbins are placed under each sign board for the easy segregation of waste as biodegradable and non-degradable waste.
- Also, Students are advised and trained in the direction of minimalistic use of plastics and reduction in the use of Plastics.
- Every year, College will celebrate to mark the World Environment Day. Students and staffs are actively participating in these occasions and awareness program is organised for students on the use of plastics, side effects of plastics and safe disposal of plastics.



7.1.5.4 Landscaping with trees and Plants:

The ATMECE campus is has very good landscaping done to keep the environment positive and aesthetically pleasing. This will provide a positive environment for students and give a feel of the nature all the time. The photographs given below give a glimpse of the greenery in the campus.











Campus Tour: 3D Virtual Tour

<https://www.google.com/maps/@12.3155768,76.7708122,3a,90y,178.98h,89.65t/data=!3m7!1e1!3m5!1sAF1QipMbNIRJSbCpE4gGO5j11O4MdzpwoC9alp83E754!2e10!3e12!7i6720!8i3360>